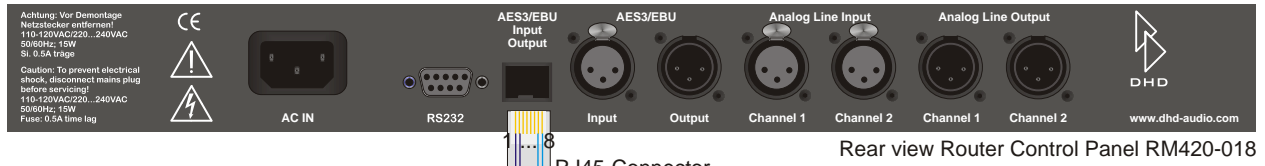
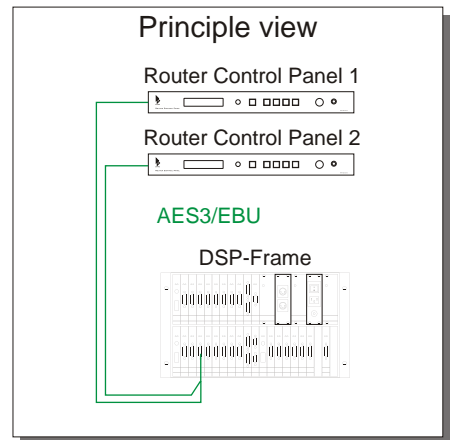
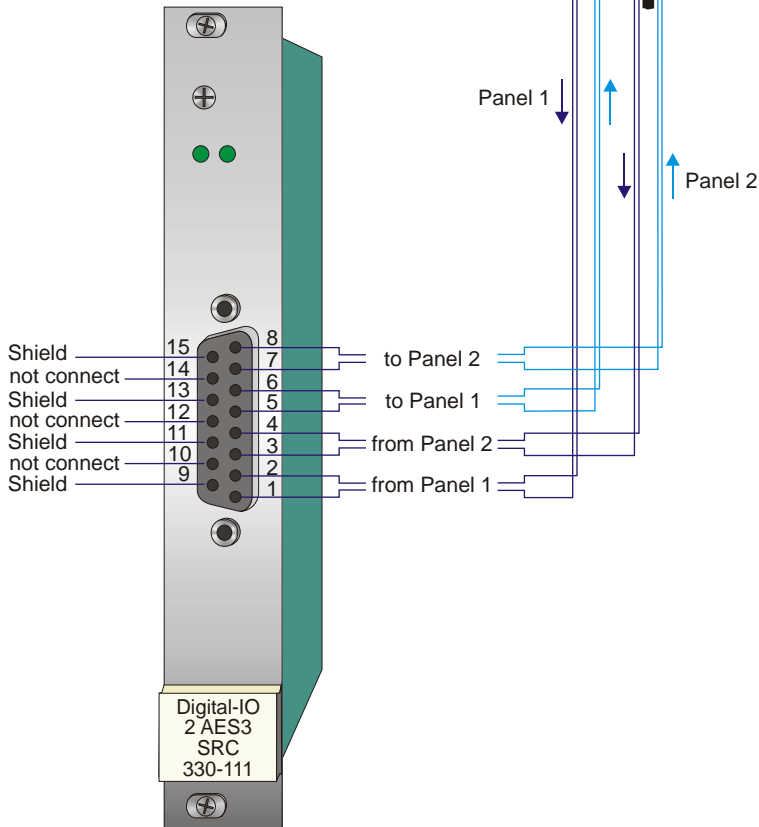
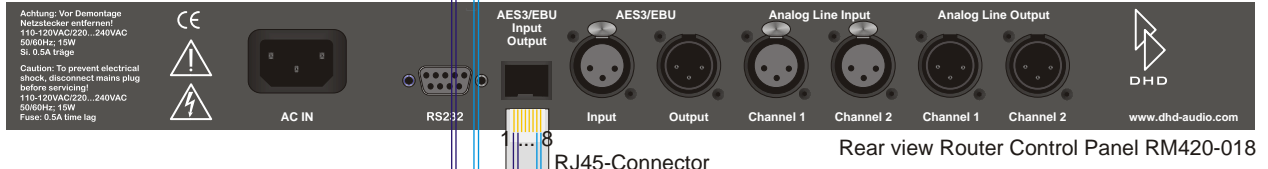


Connection of 2 Router Control Panels to DSP Frame

Router Control Panel 1



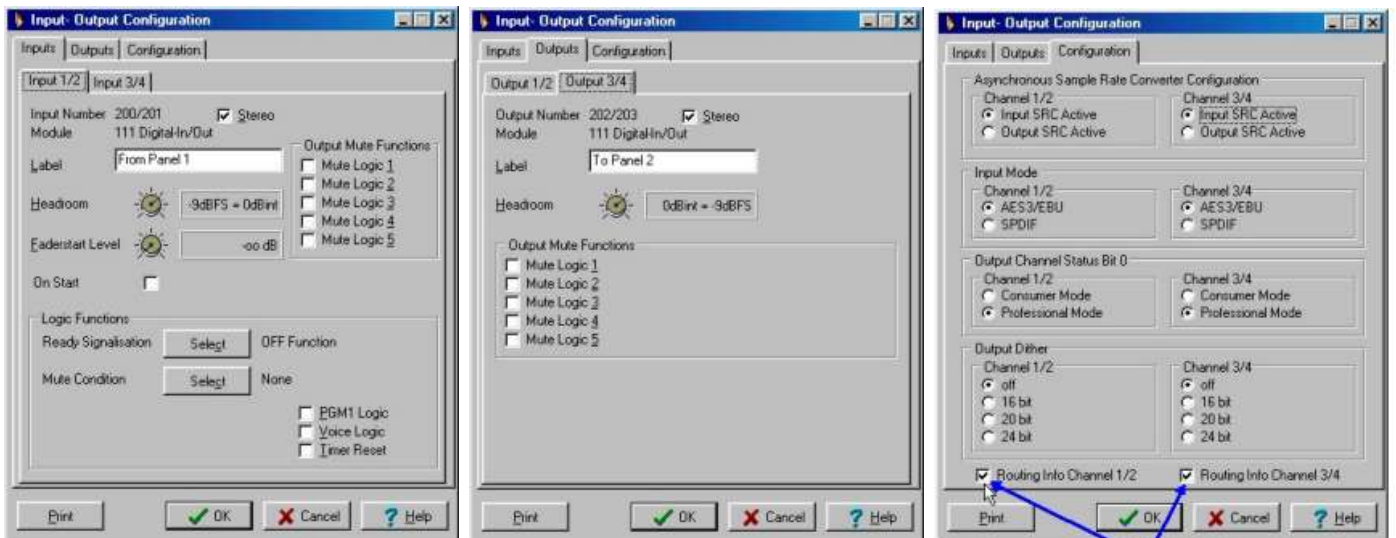
Router Control Panel 2



Description:

- AES3/EBU from DSP Frame to Router Control Panel
- ← AES3/EBU from Router Control Panel to DSP Frame

Configuration software settings (Definition.exe)



Activate Routing^{*1}

*1) Control Protocol to DHD DSP Frame via AES3/EBU Channel Status Bits (Byte 6 to 13)



DHD