

4.4.2 Fader Channel Processing

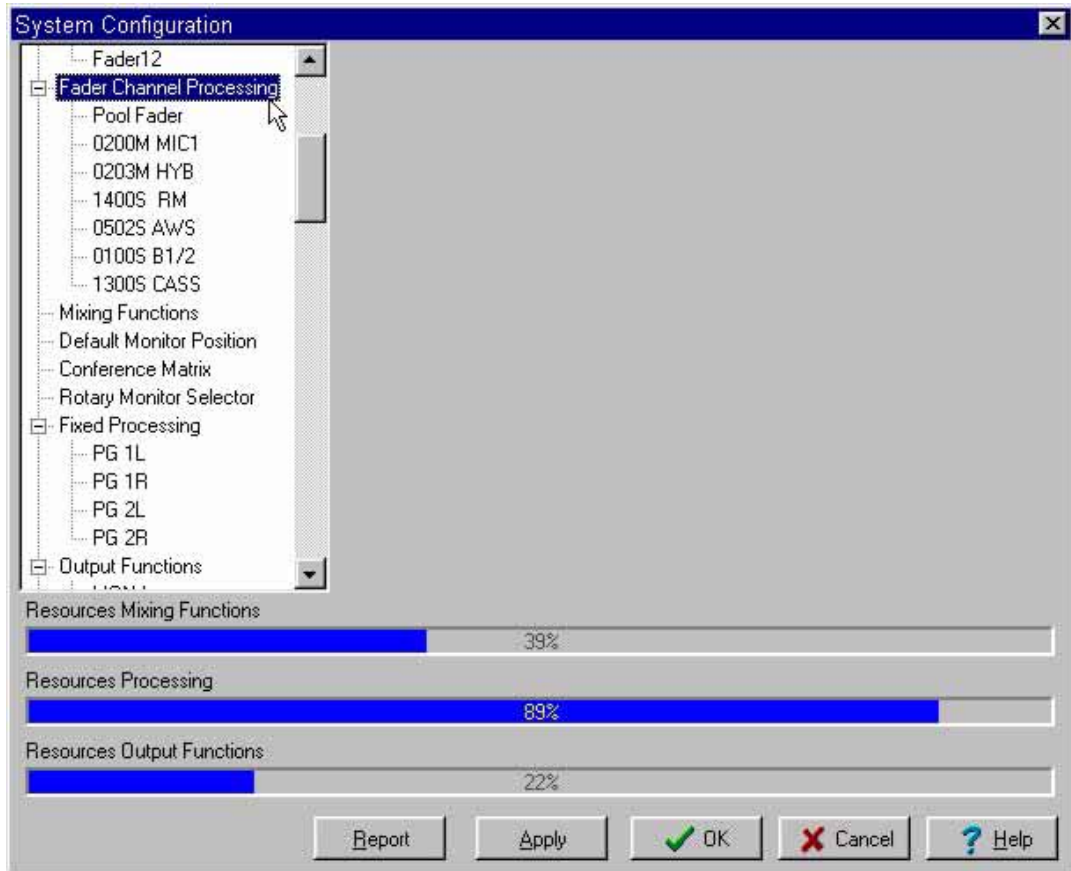


Figure 115:

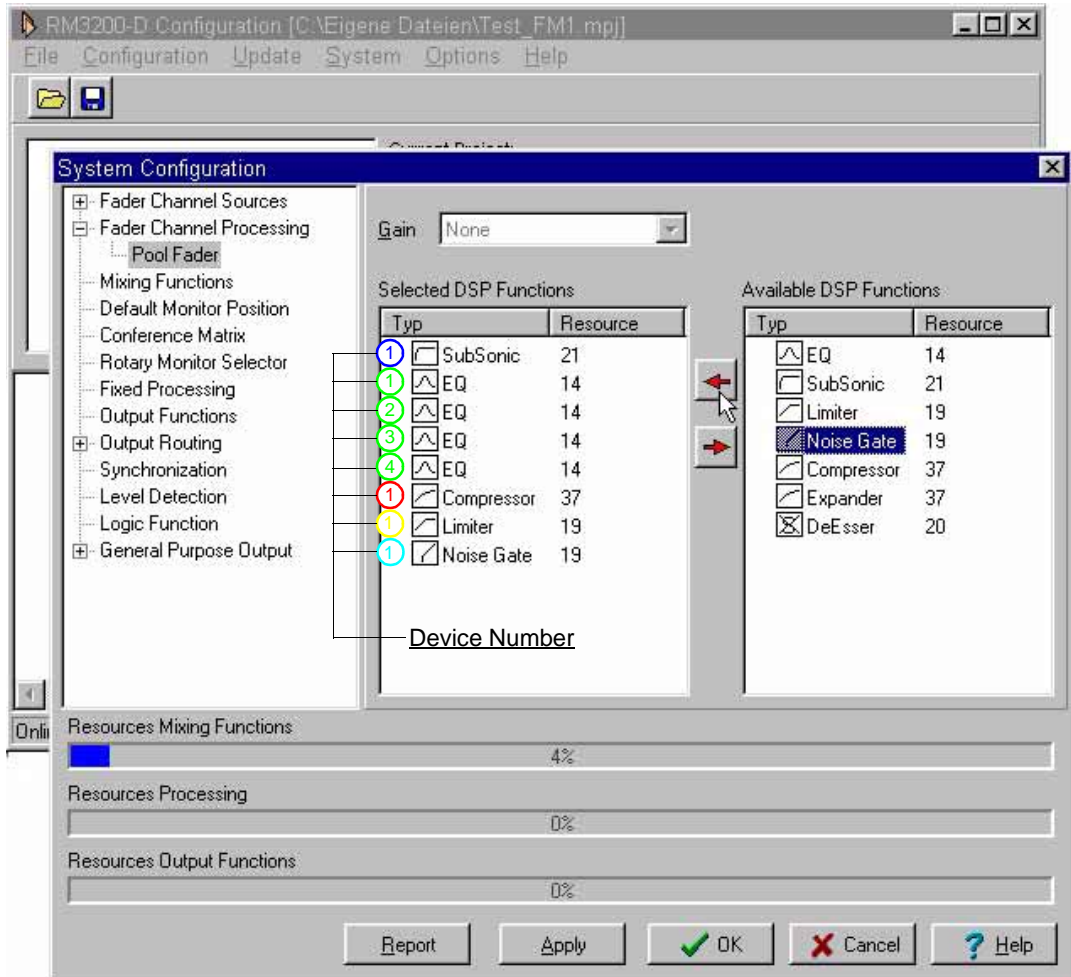


Figure 116:

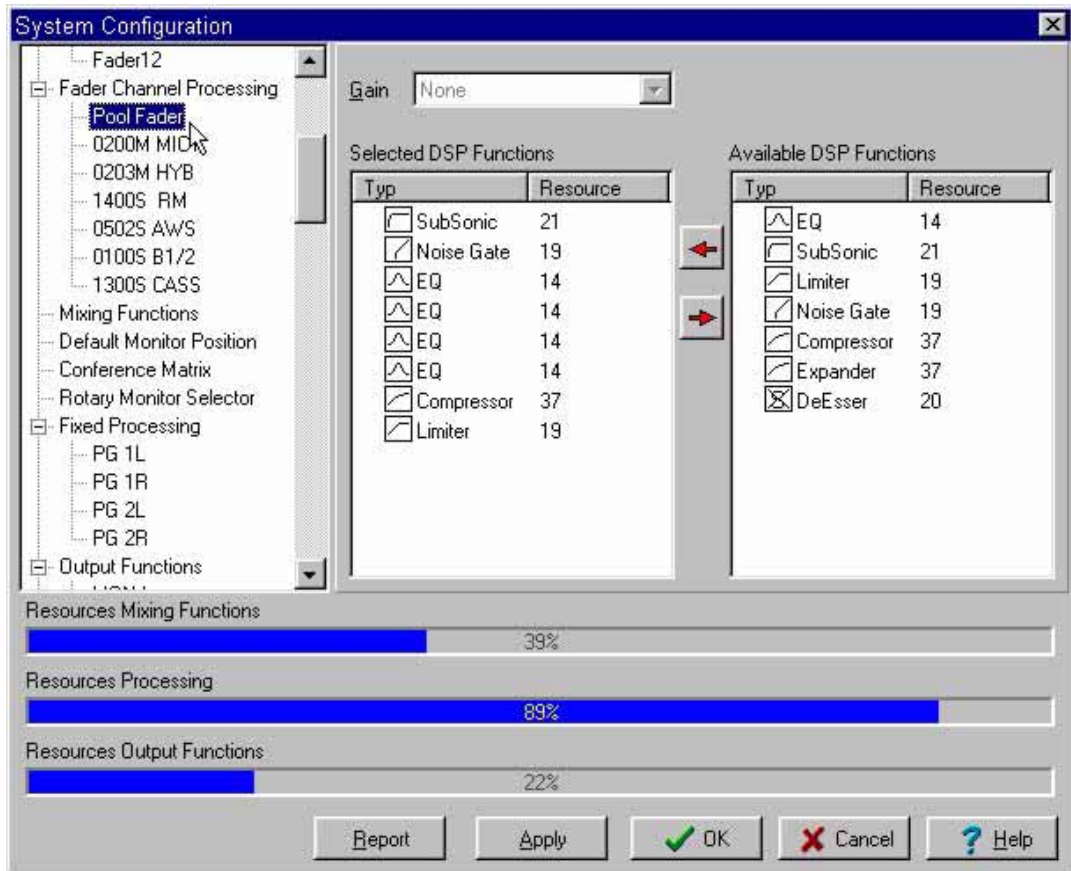


Figure 117:

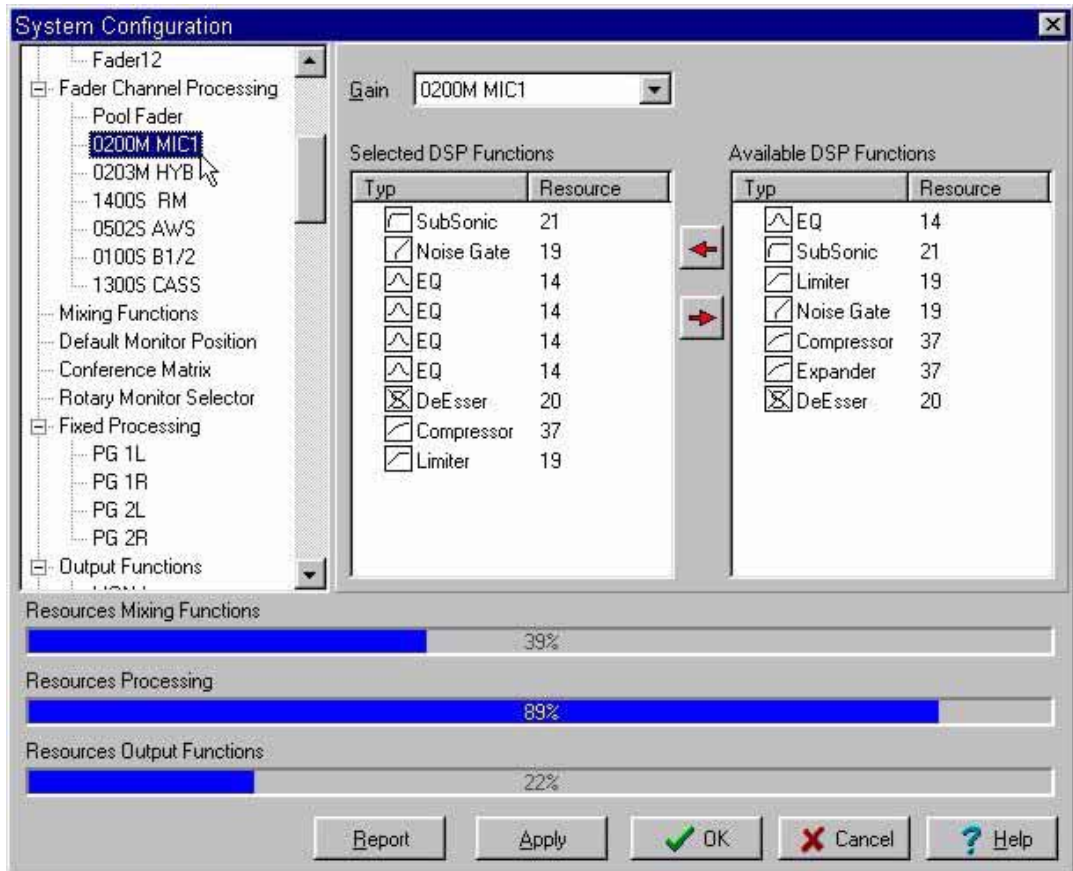


Figure 118:

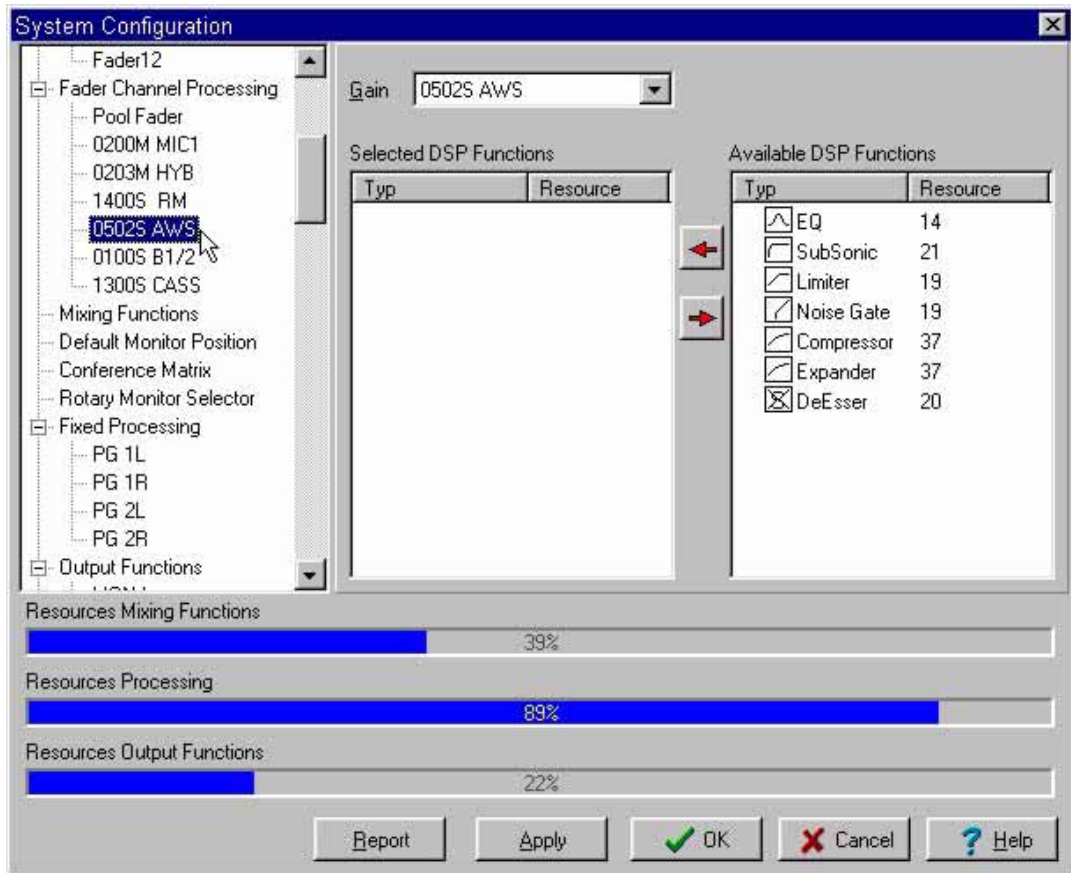


Figure 119:

4.4.3 Mixing Functions

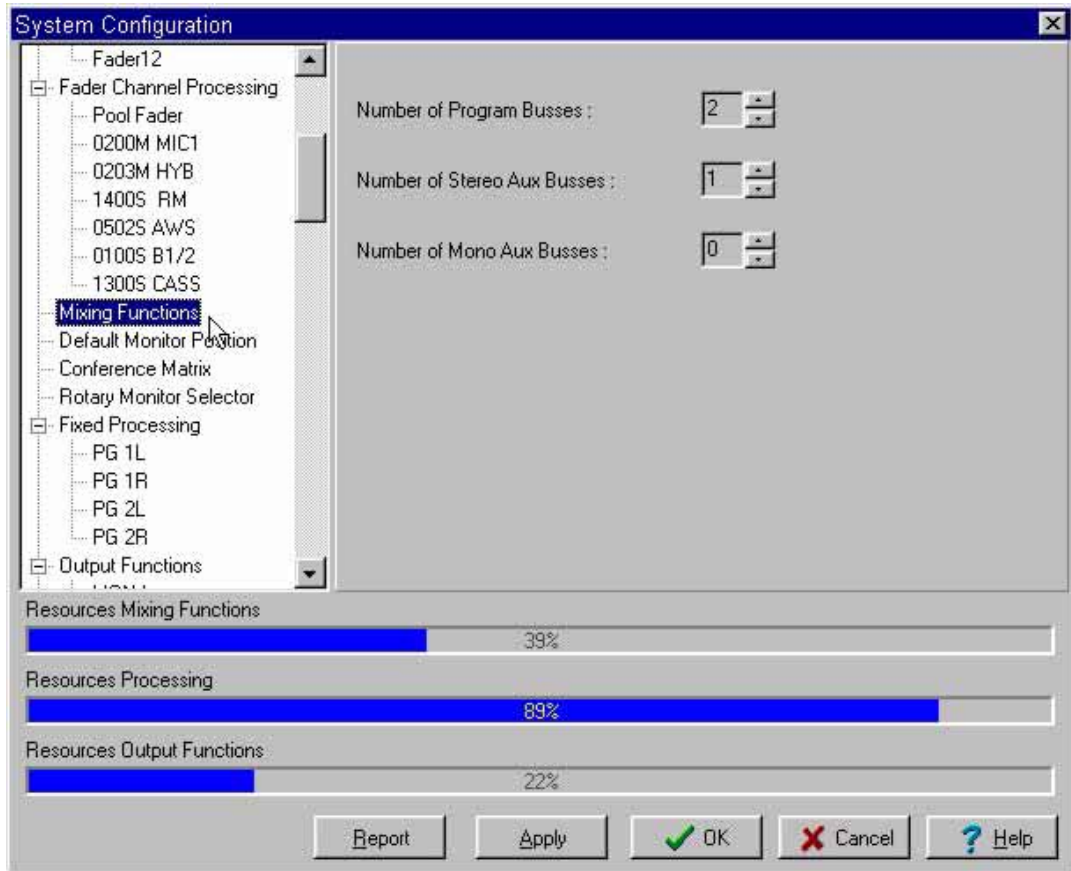


Figure 120:

4.4.4 Default Monitor Position

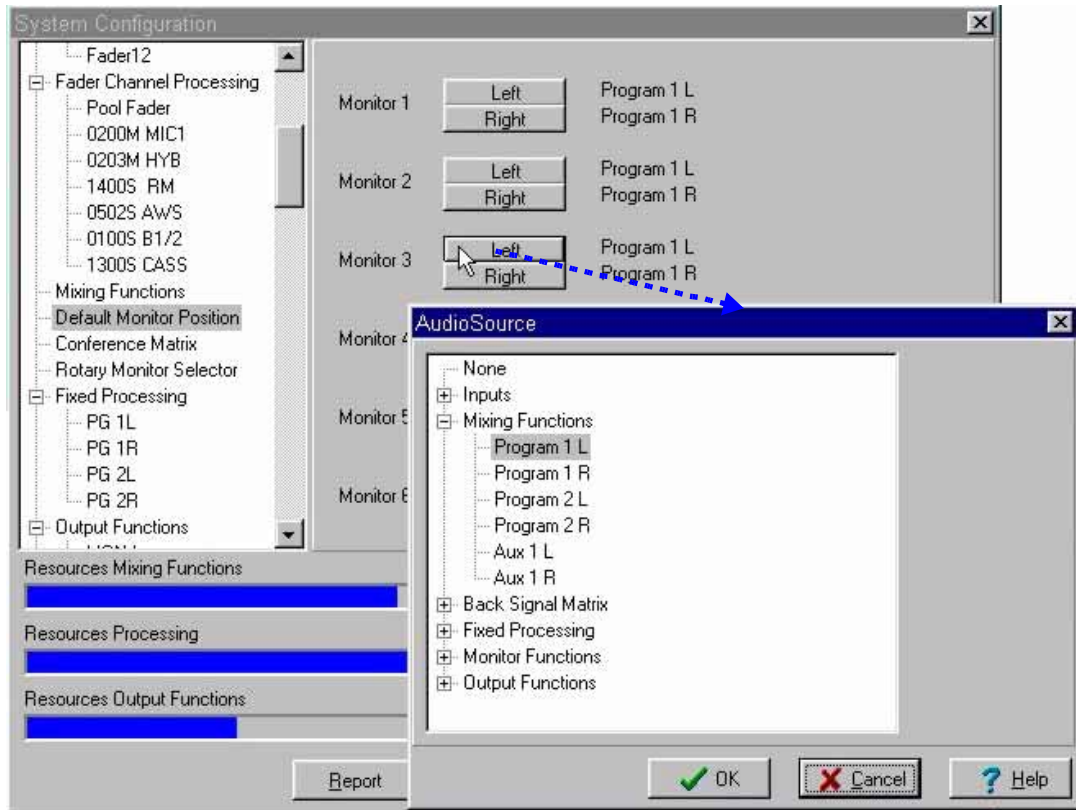


Figure 121:

4.4.5 Conference Matrix

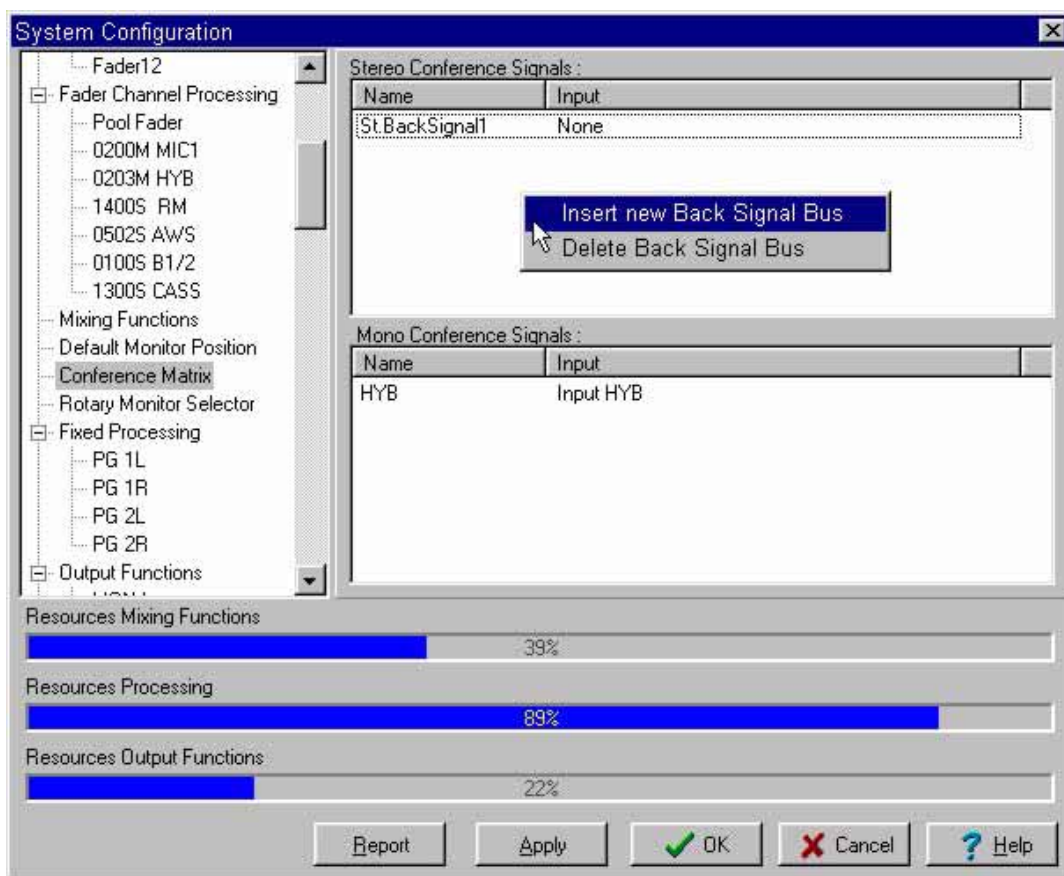


Figure 122:

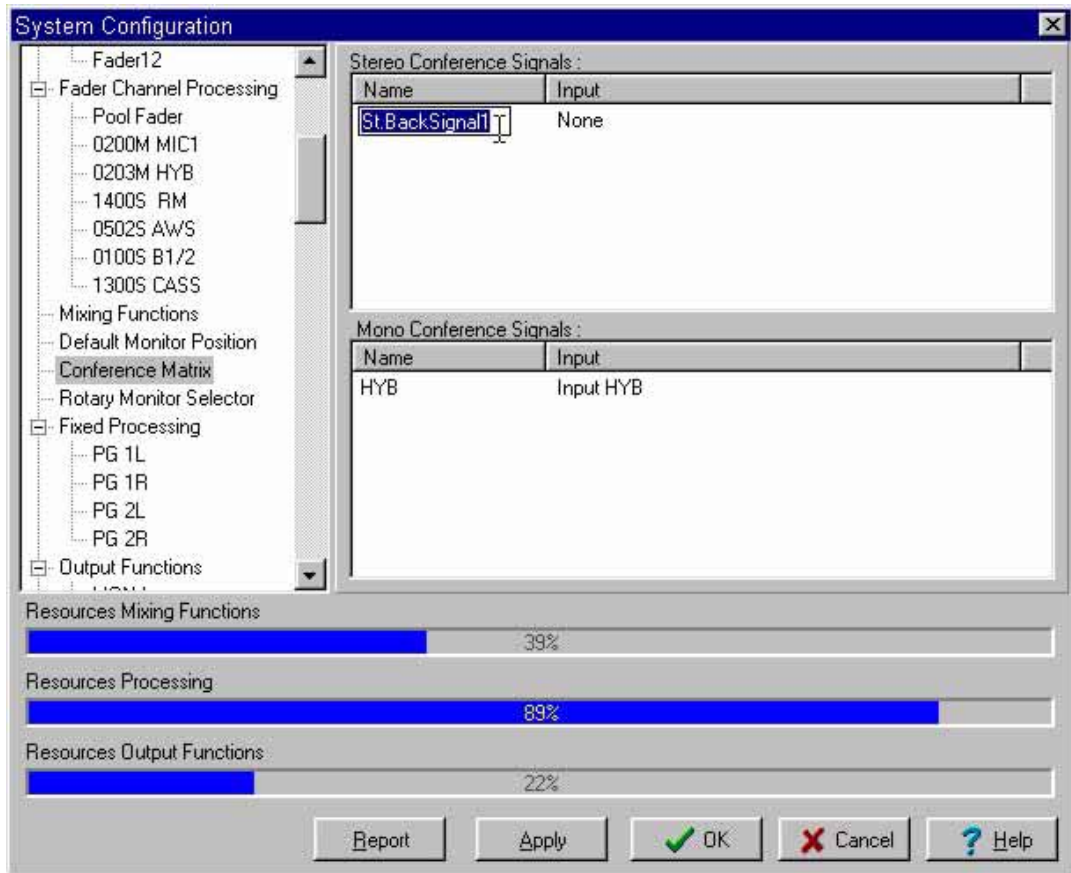


Figure 123:

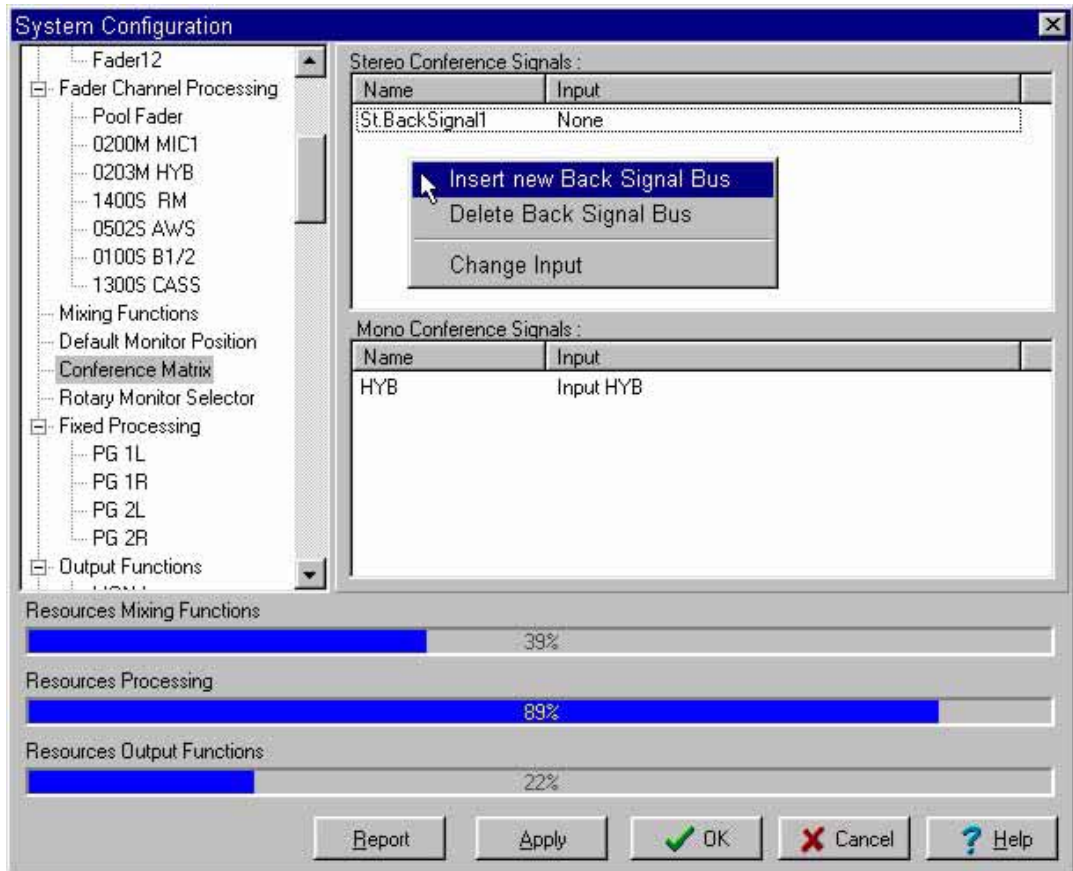


Figure 124:

4.4.6 Rotary Monitor Selector

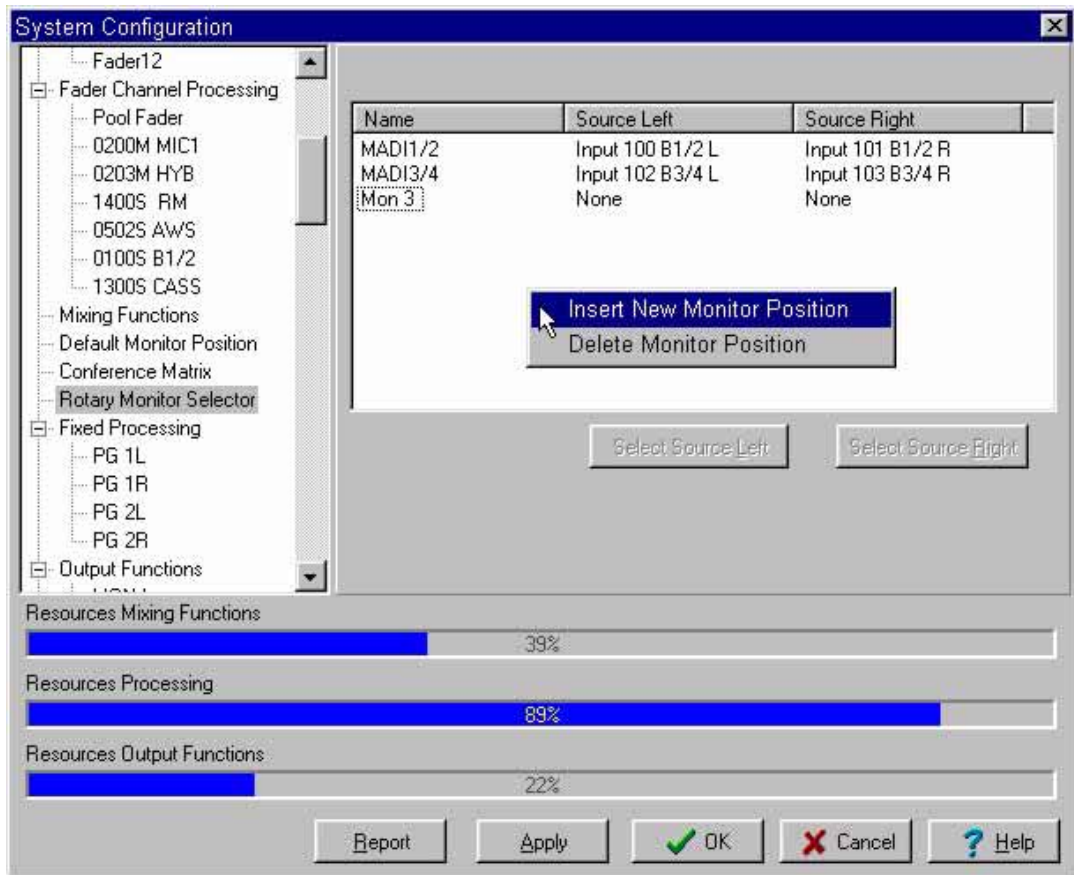


Figure 125:

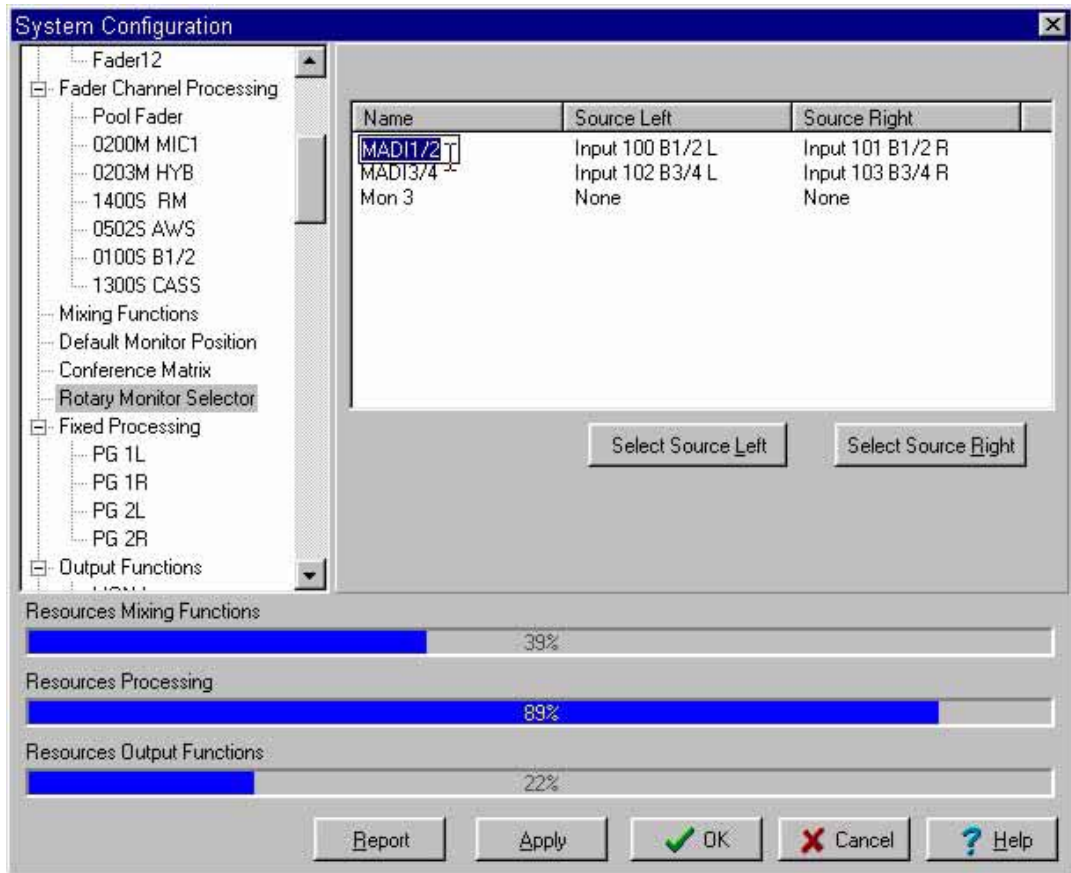


Figure 126:

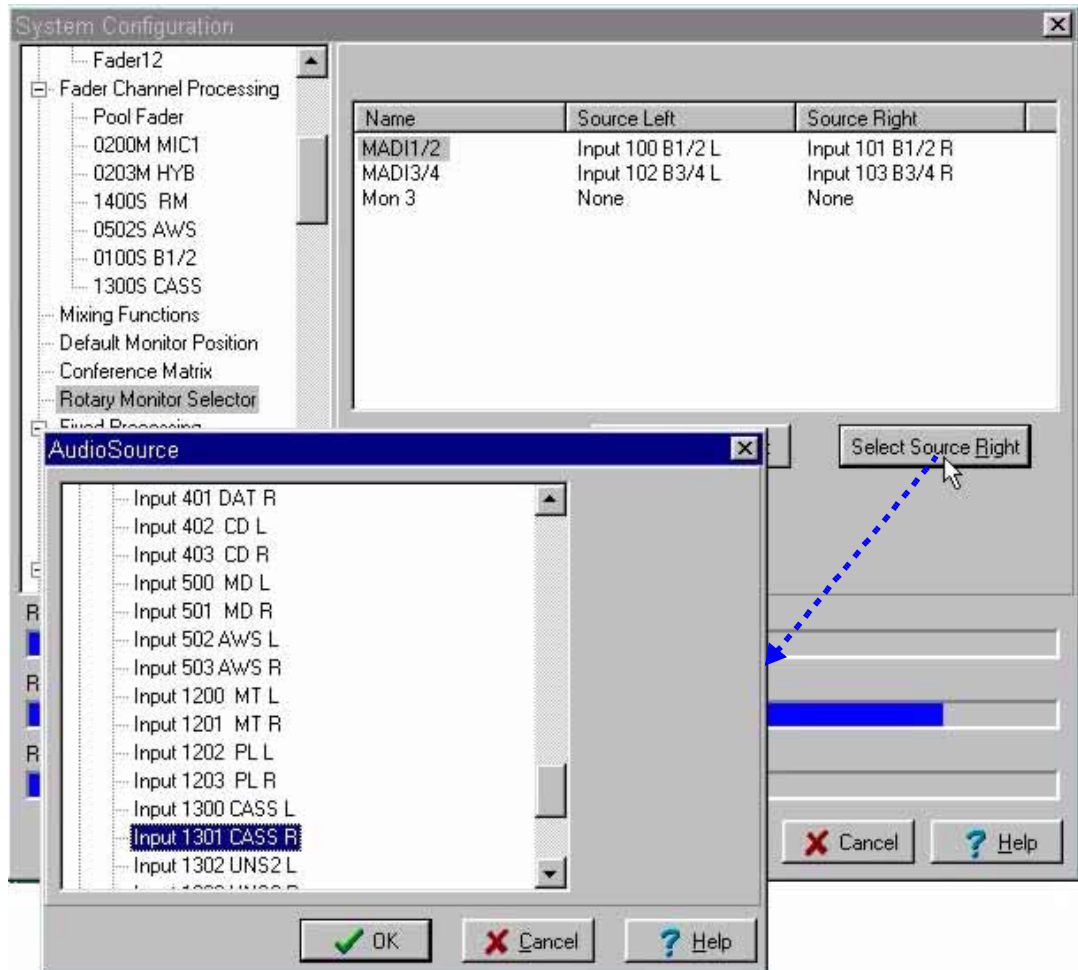


Figure 127:

4.4.7 Fixed Processing

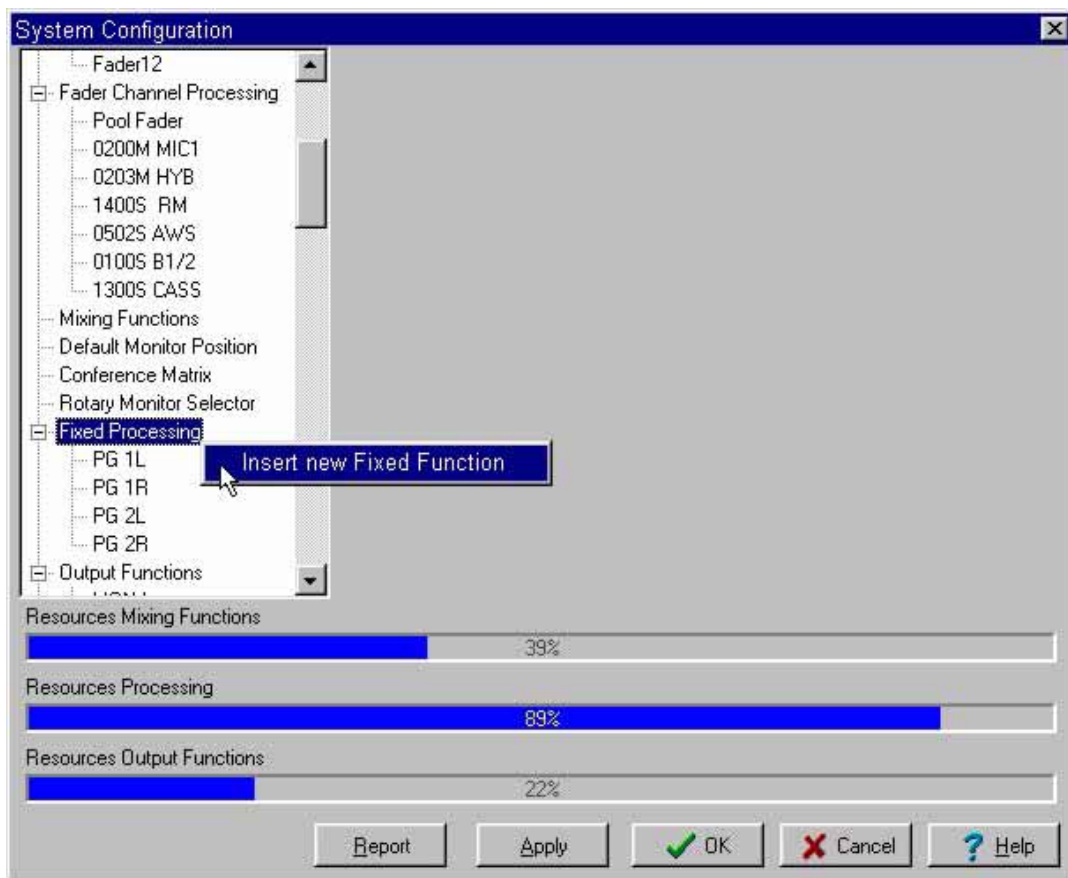


Figure 128:

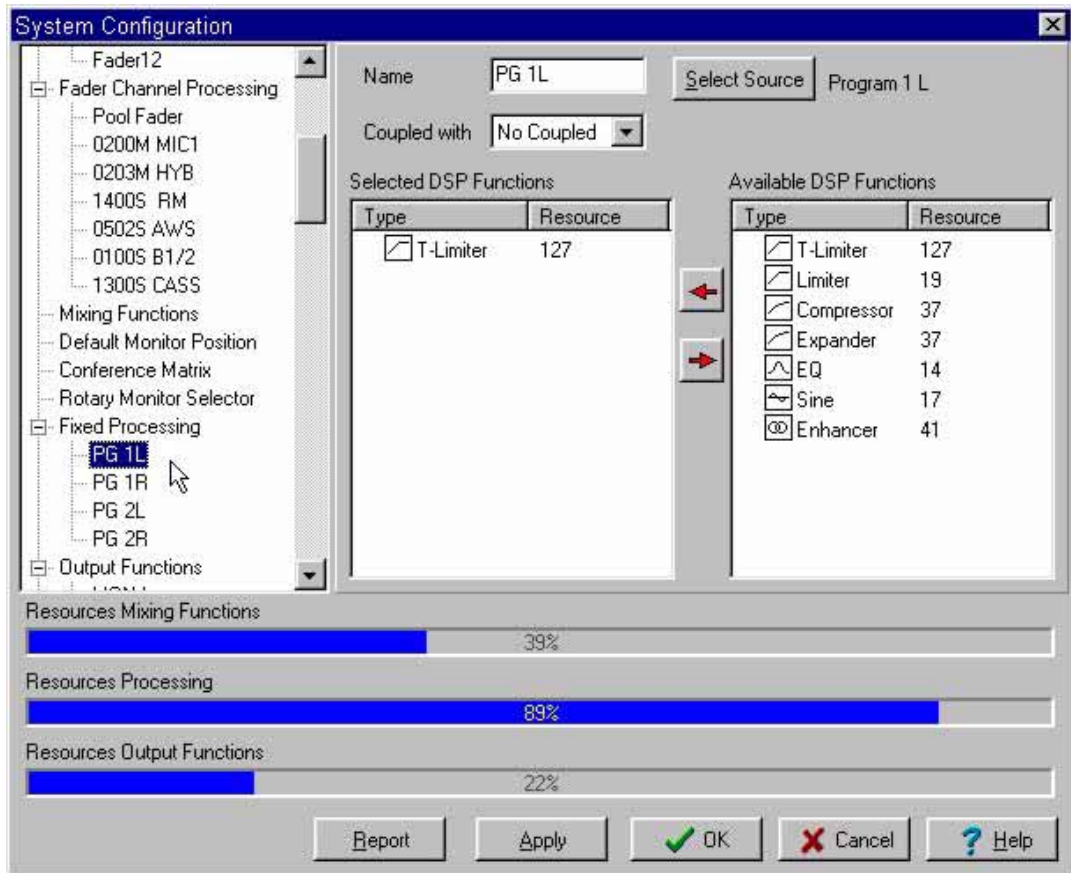


Figure 129:

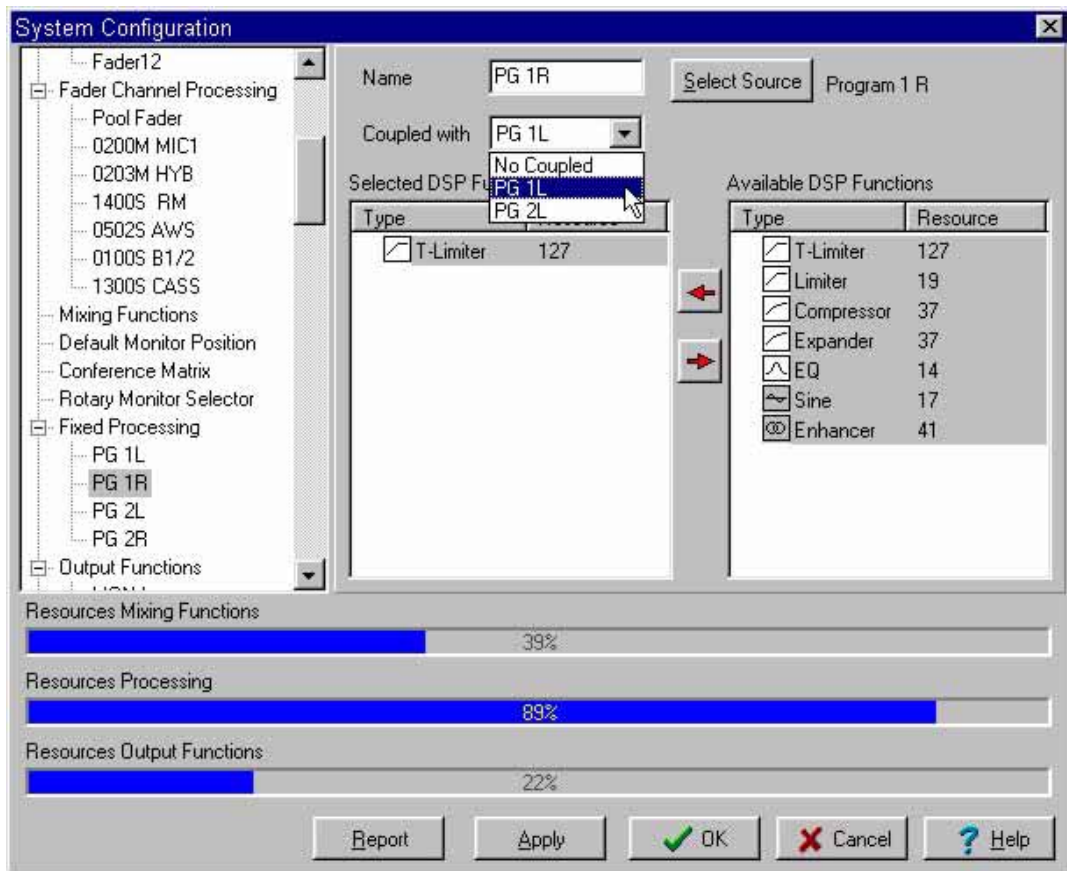


Figure 130:

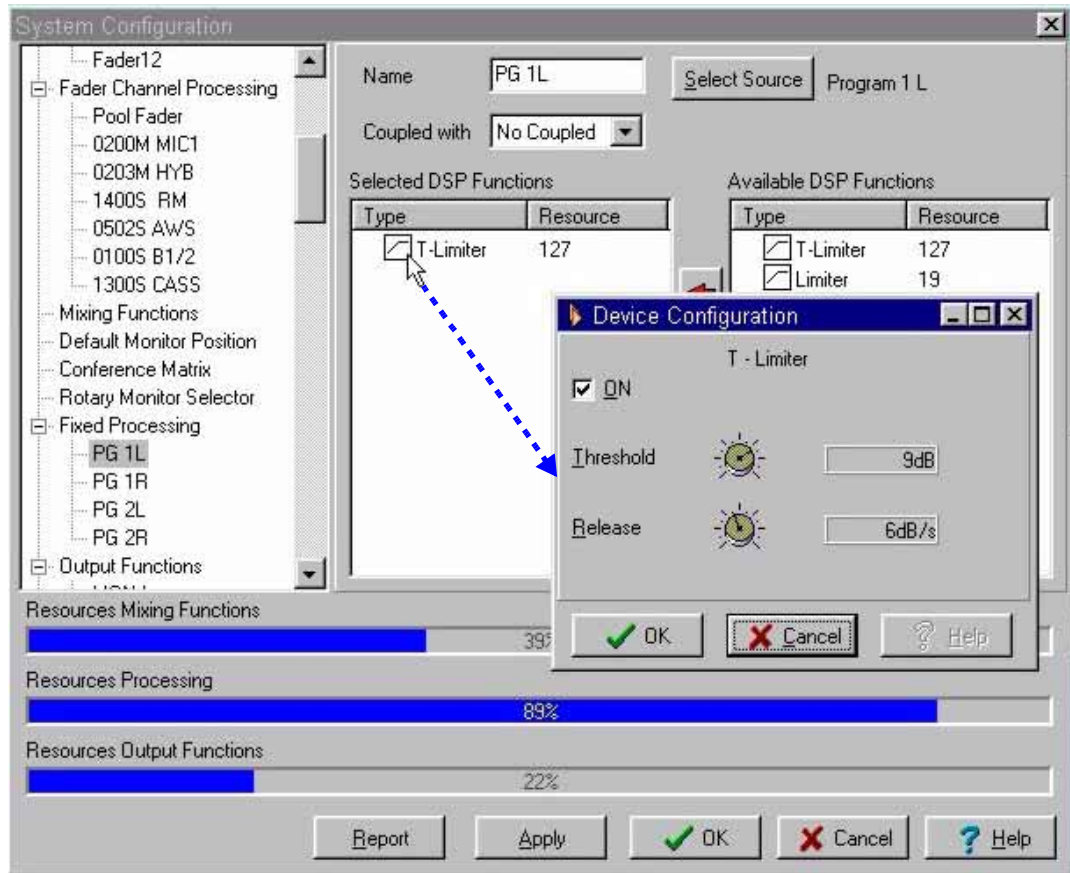


Figure 131:

4.4.8 Output Functions

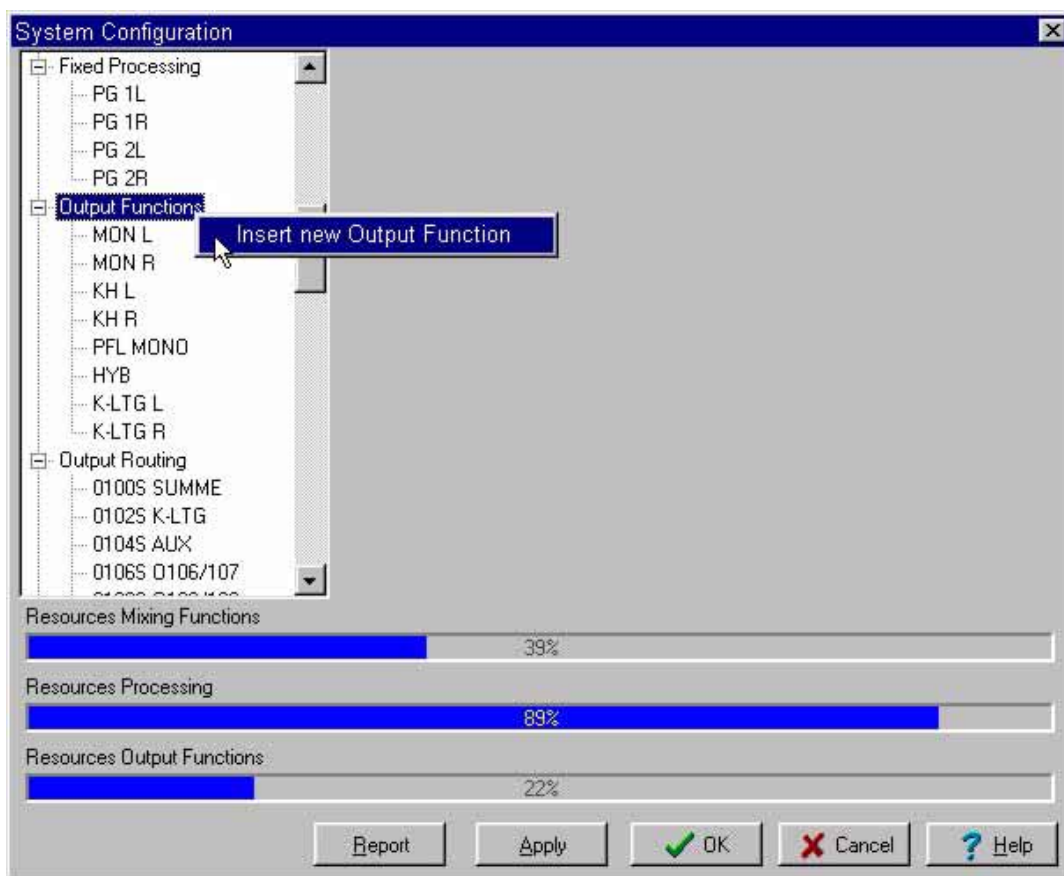


Figure 132:

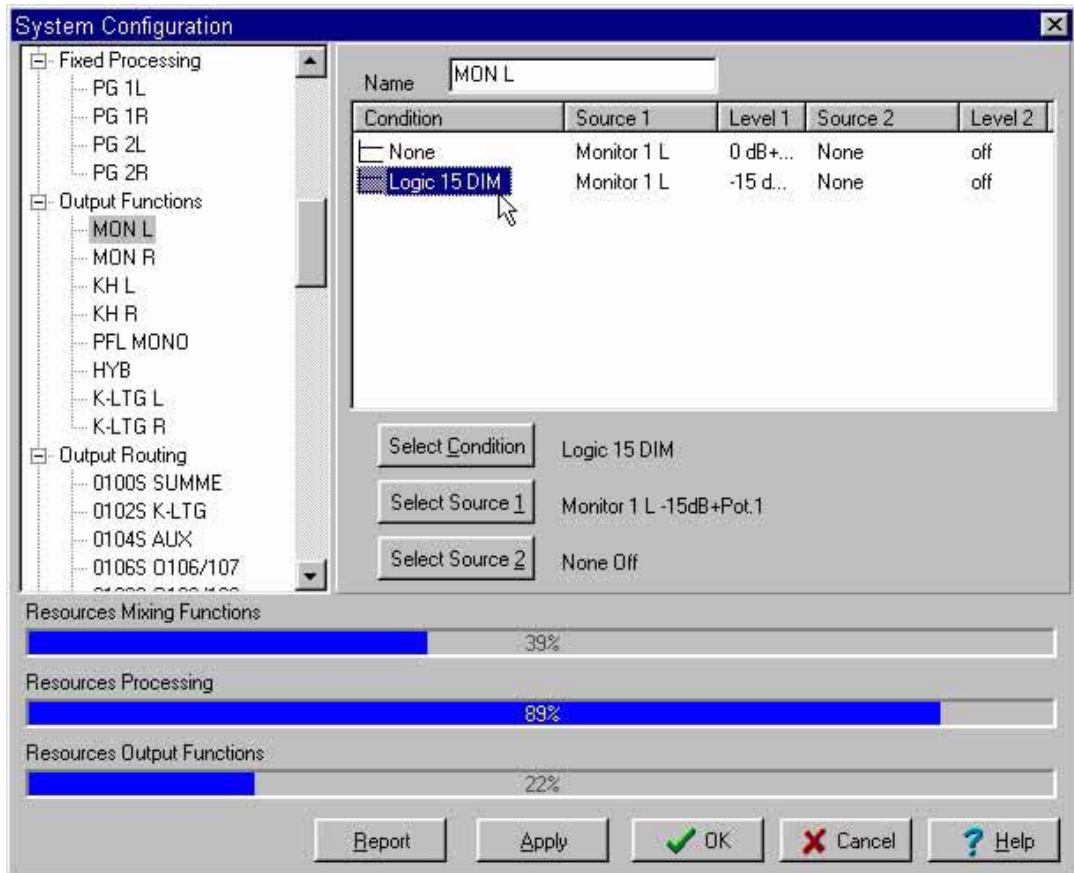


Figure 133:

4.4.9 Output Routing

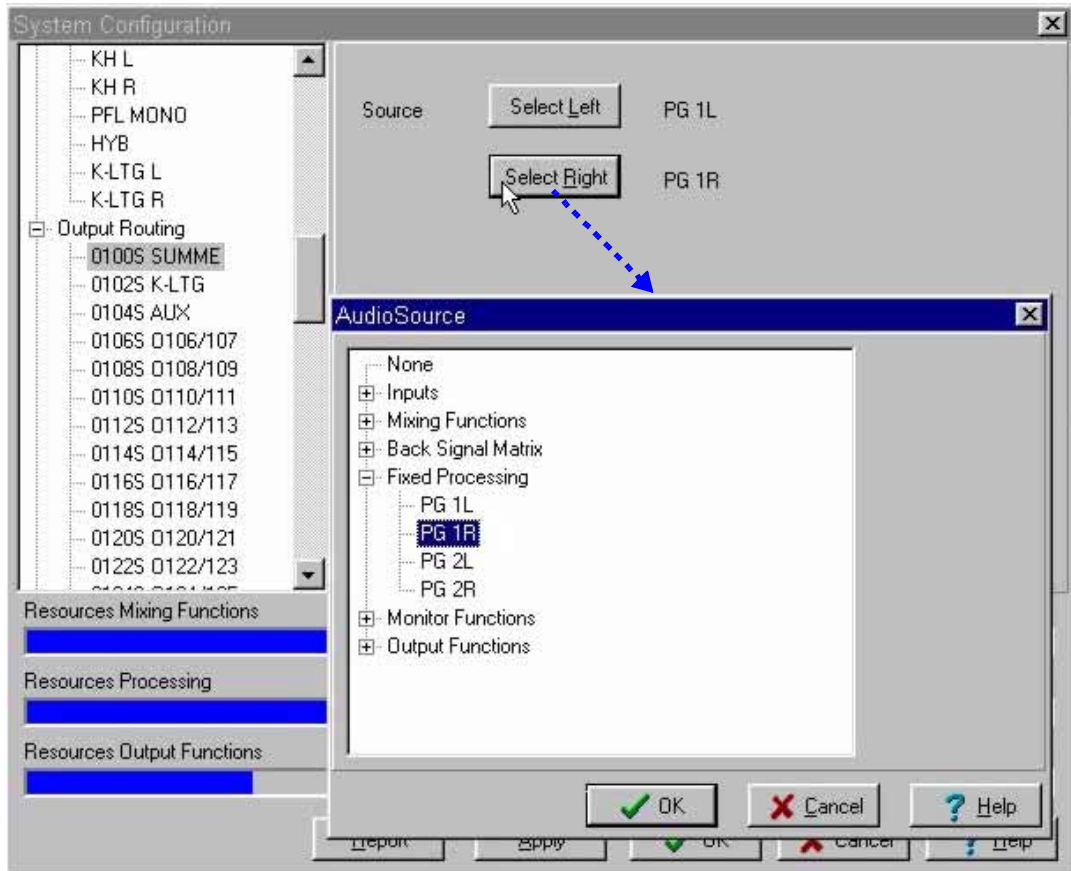


Figure 134:

4.4.10 Synchronization

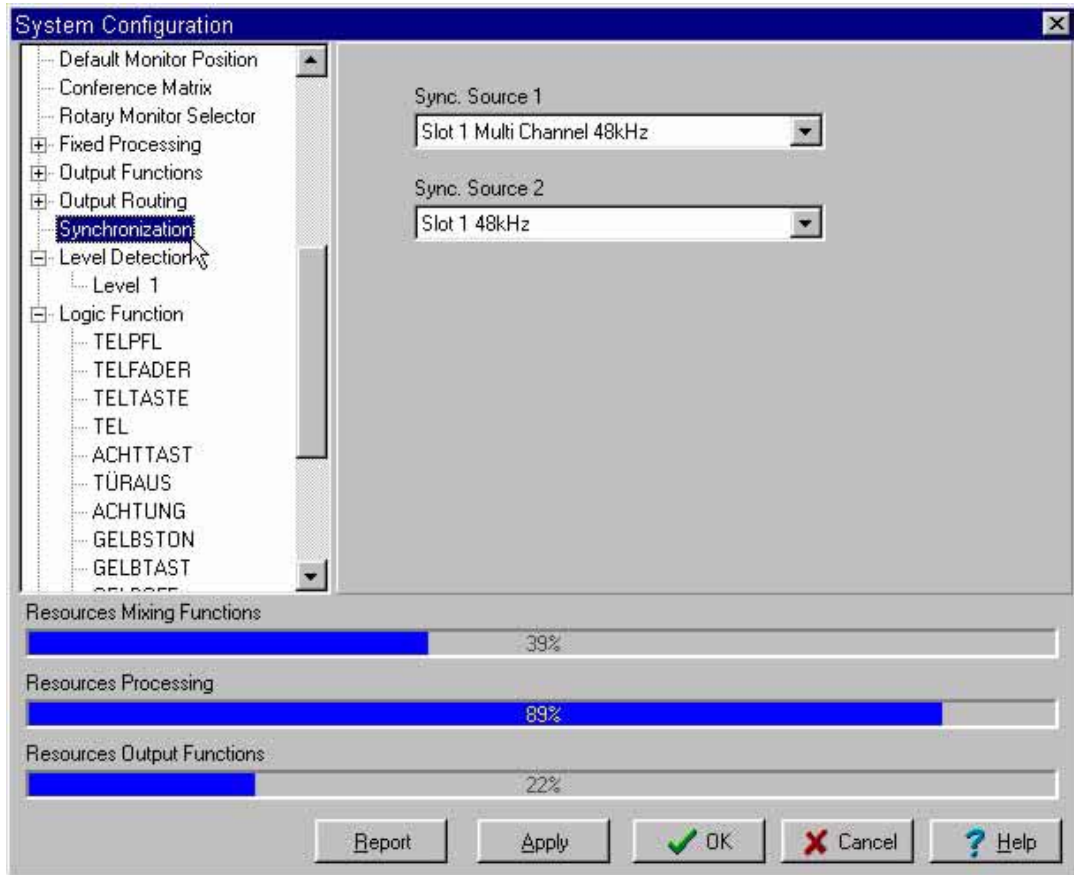


Figure 135:

4.4.11 Level Detection

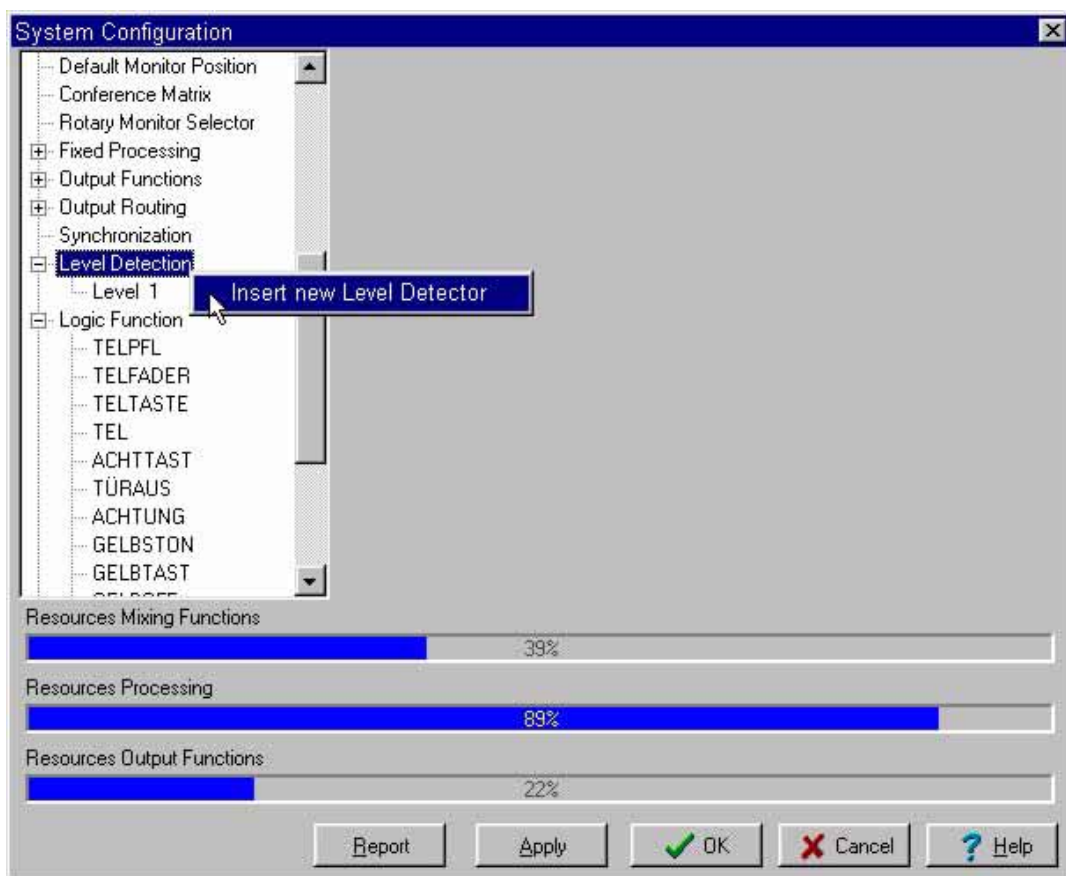


Figure 136:

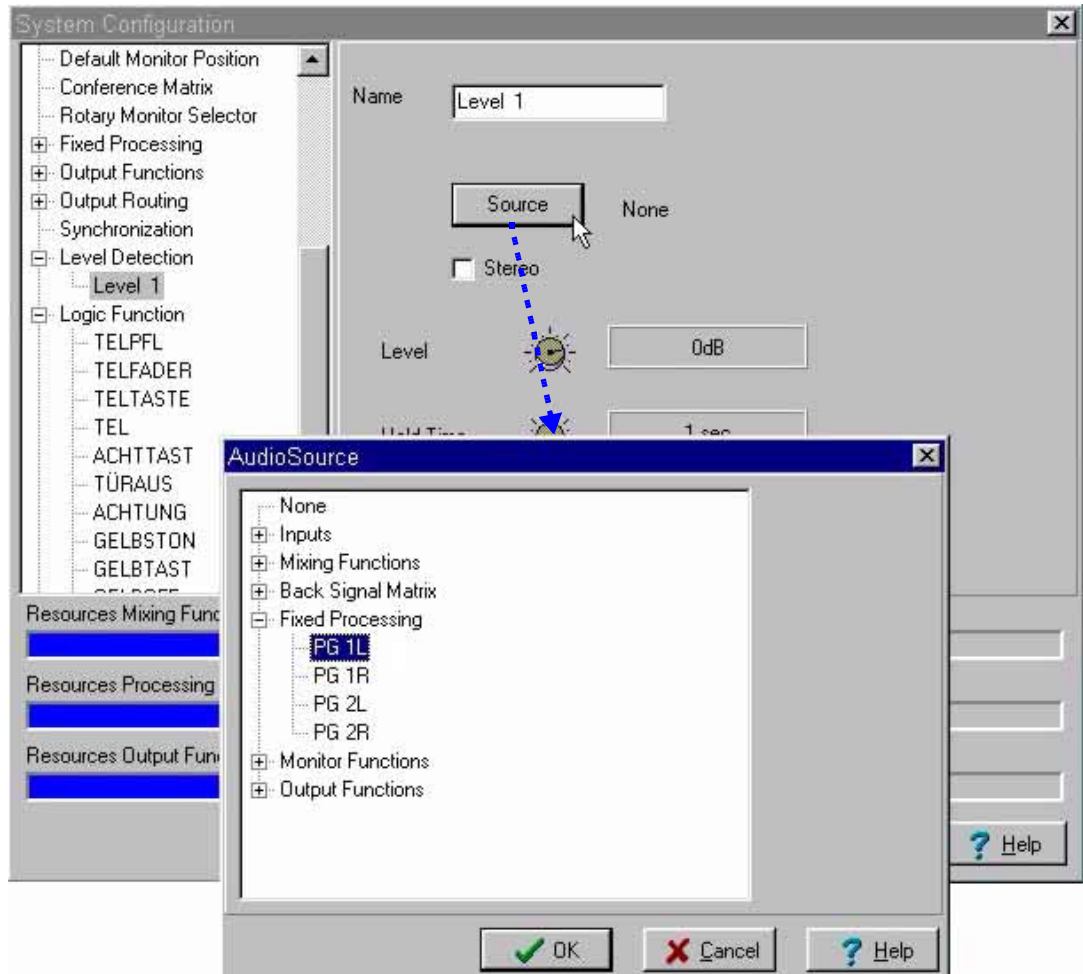


Figure 137:

4.4.12 Logic Function

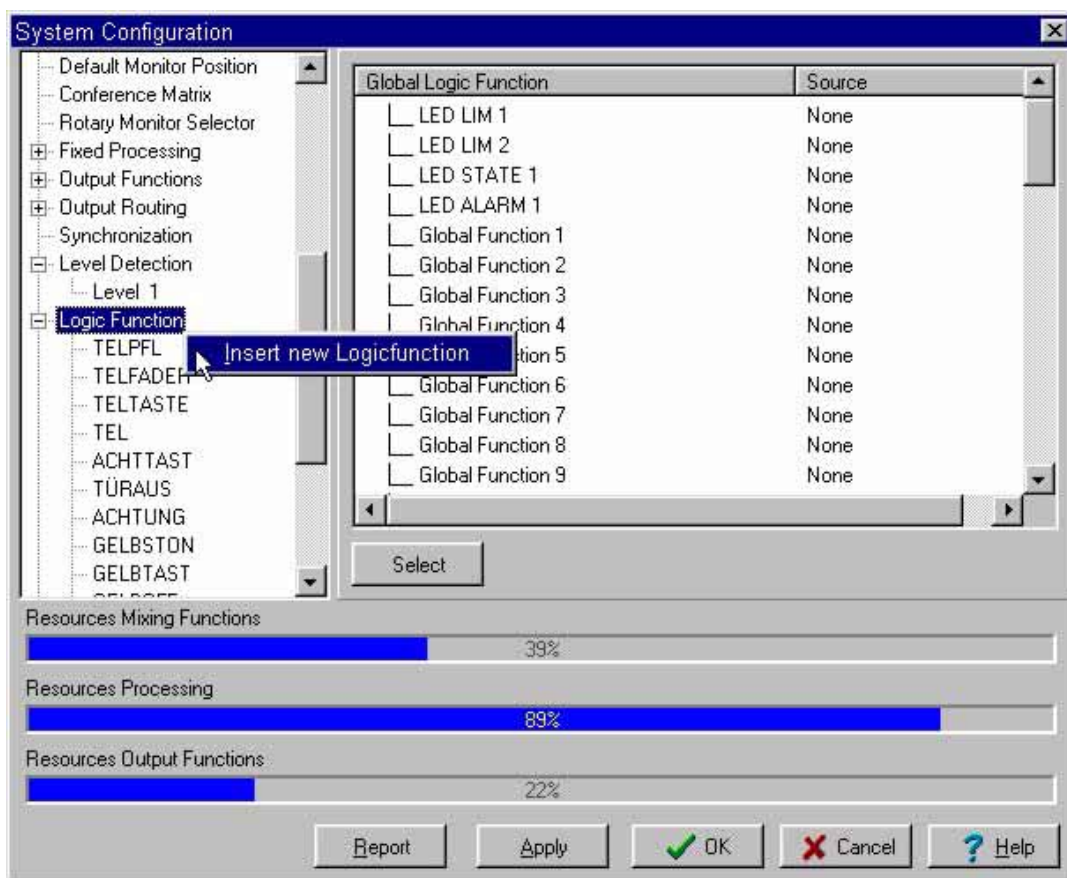


Figure 138:

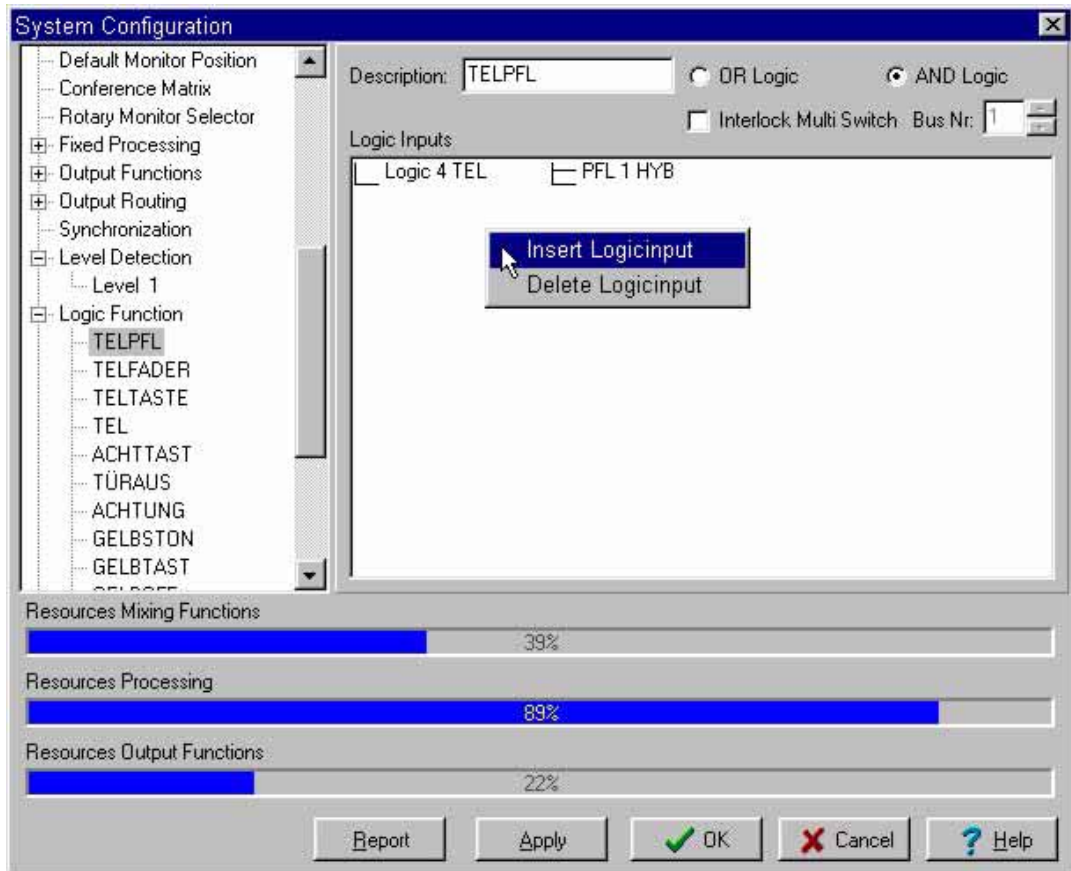


Figure 139:

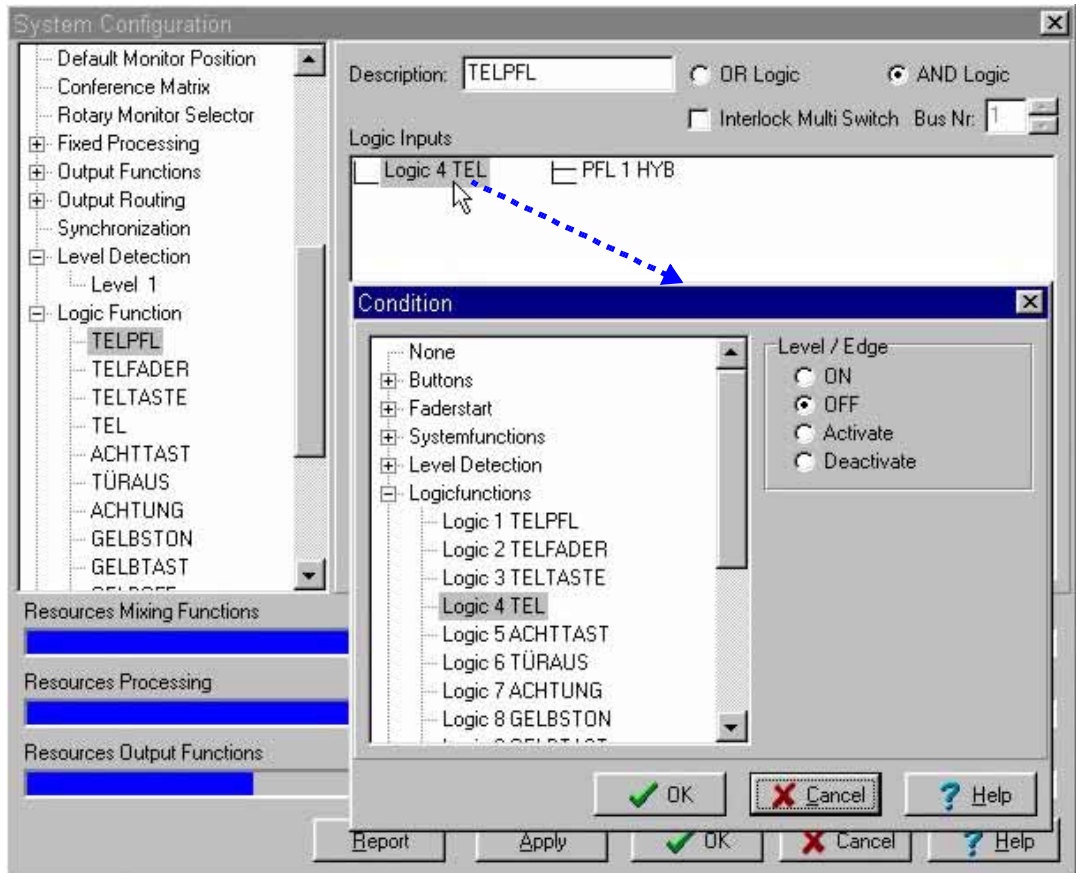


Figure 140:

4.4.13 General Purpose Output

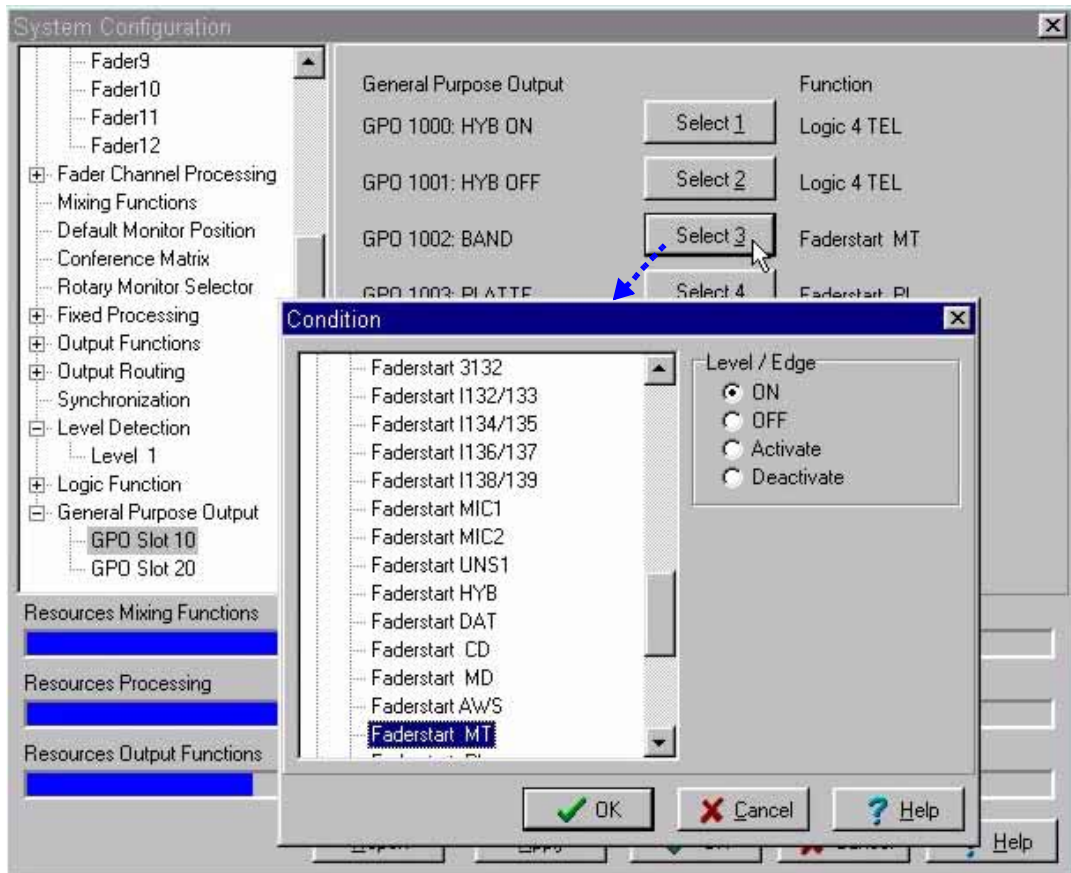


Figure 141:

4.4.14 Input Sample Rate Converter

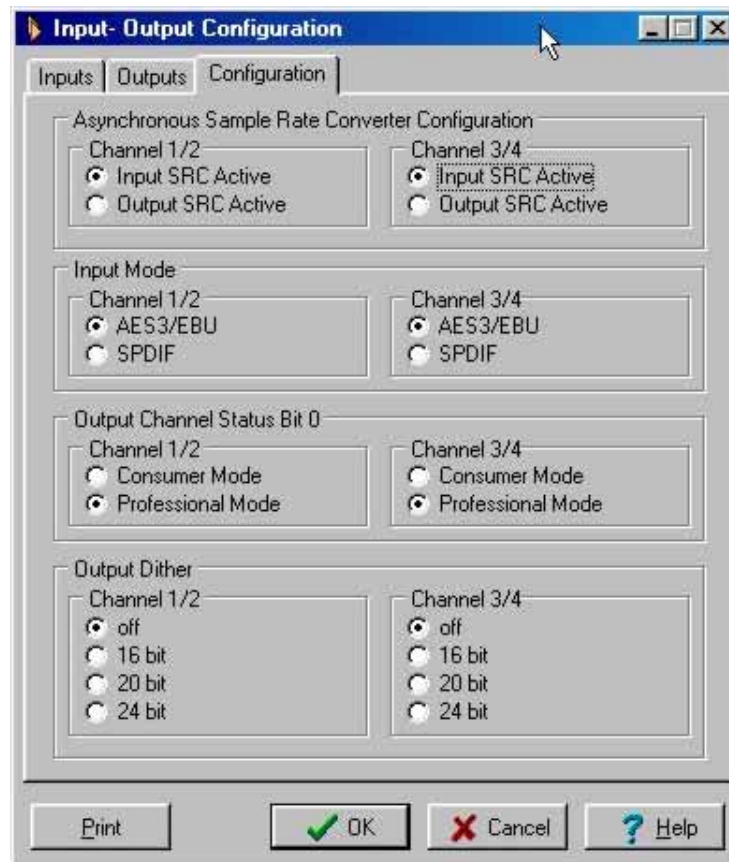
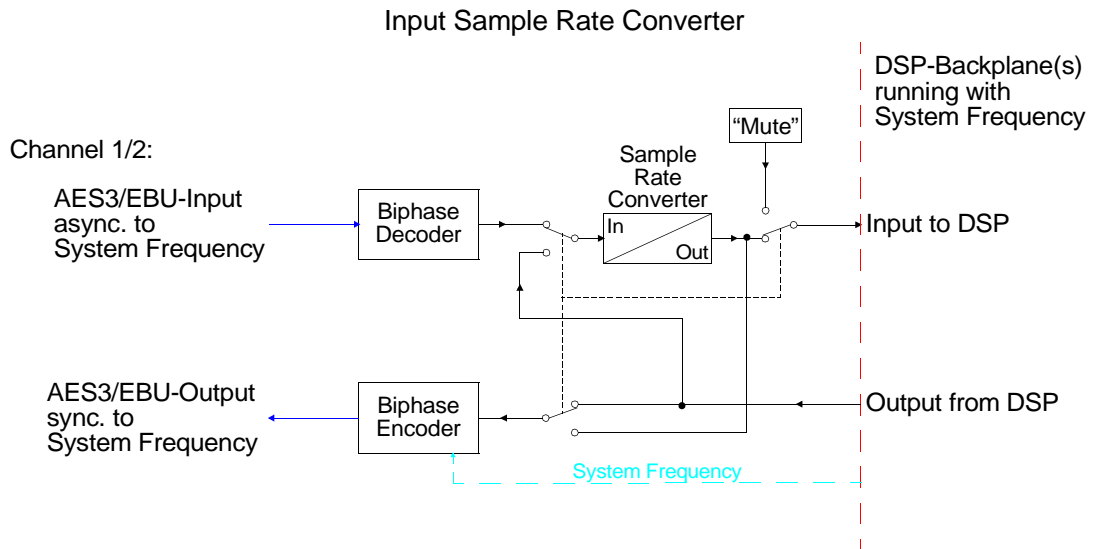


Figure 142:

4.4.15 Output Sample Rate Converter

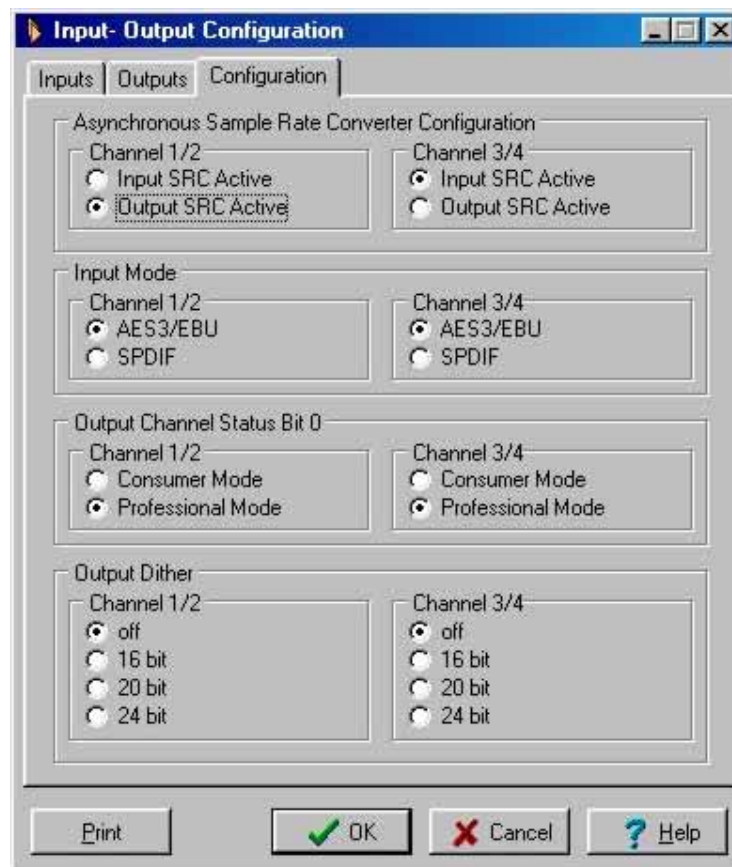
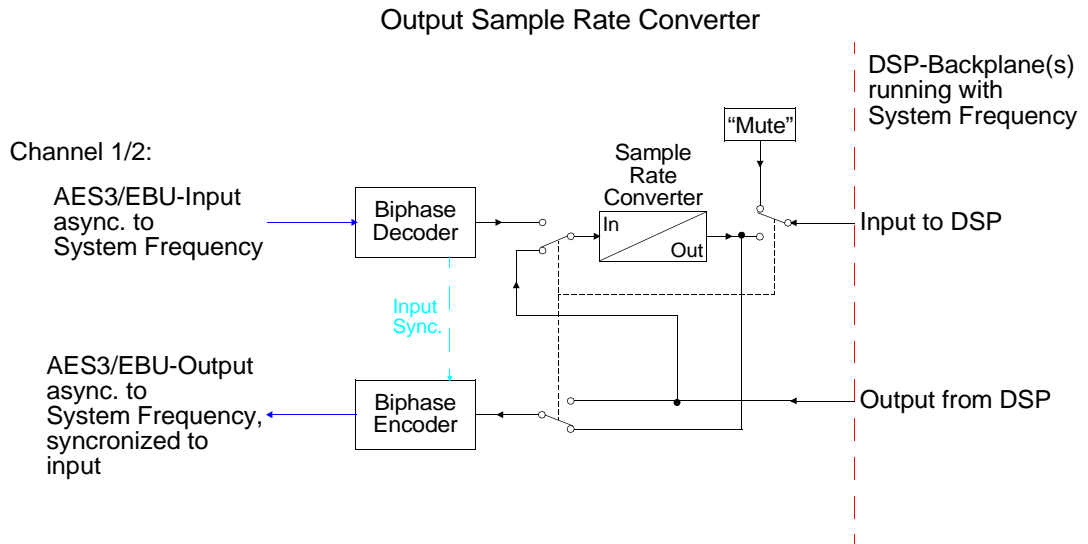


Figure 143:

